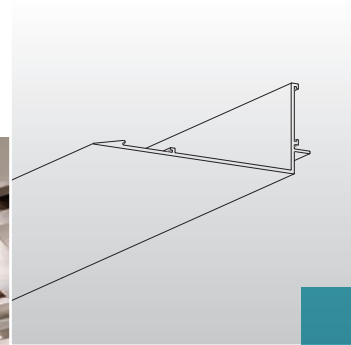


Rockfon® Infinity™ CDX/SCD

Extruded Aluminum Perimeter Trim



*Project – Rockfon®/ROCKWOOL North American offices in Milton, Ontario
Product – Rockfon® Infinity™ CDX/SCD*

Ideal for: Offices, Lobbies, Transit,
Hospitality, Retail, Healthcare

- Sturdy extruded aluminum
- Seamless integration with Rockfon concealed stone wool panels

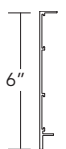
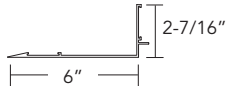
Rockfon® Infinity™ CDX/SCD

LEED® V4 HIGHLIGHTS

Materials and Resources (MR)

- Waste Management Planning ✓
- Interiors Life Cycle Impact Reduction ✓
- Environmental Product Declarations ✓
- Sourcing of Raw Materials ✓
- Material Ingredients ✓
- Waste Management ✓

RECYCLED CONTENT: UP TO 85%

Detail	Product Description	Dimensions	Suspension	Material
	6" Infinity™ CDX/SCD Straight	L = 12'	15/16"	Extruded Aluminum
	6" Infinity™ CDX/SCD Z	L = 12'	15/16"	Extruded Aluminum

Available in the following standard colors
and Rockfon Color-all™ colors:



01 White



08 Black



44 Satin Silver



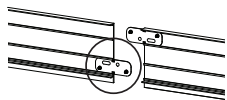
888
Winchester
Grey



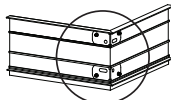
Color-all



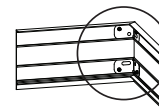
Accessories



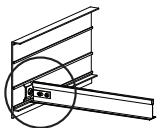
Straight Splice Plate



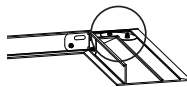
Inside Corner
(Vertical) Splice
Plate



Outside Corner
(Vertical) Splice
Plate



Grid Attachment
Clip



Outside Corner
(Horizontal) Splice
Plate

Material

Extruded aluminum



Fire Performance

Surface burning characteristics:
Smoke Developed Index
(UL Labeled): 0



Environment

Fully recyclable



Warranty Information

1-Year Limited
Product Warranty.
See www.rockfon.com

Rockfon® is a registered trademark
of the ROCKWOOL Group.

2018 | Subject to alterations in range and product technology without prior notice. Rockfon accepts no responsibility for printing errors.
© ROCKWOOL International A/S 2018. All rights reserved. ® denotes a trademark that is registered in the United States of America.

Rockfon

4849 S. Austin Ave.
Chicago, IL 60638 USA

Tel. +1-800-323-7164
Fax. +1-800-222-3744
www.rockfon.com
360003080

