

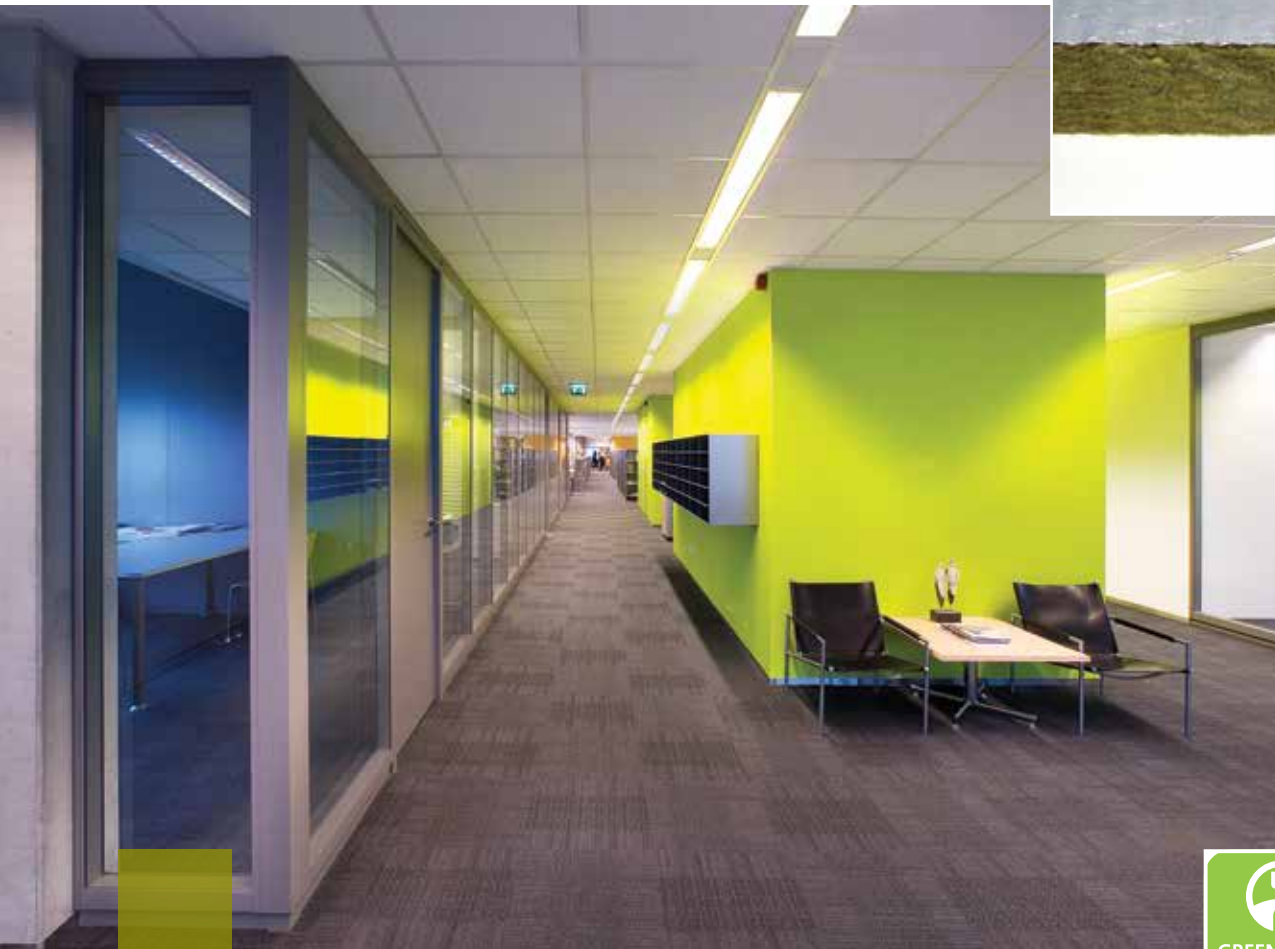
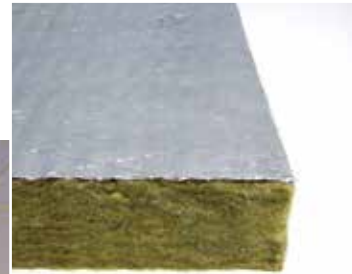
# Rockfon® Plenum Barrier Board

## Features & Benefits

- Improves sound isolation and privacy between rooms
- Installs quickly above interior partitions
- Lightweight and easy to cut
- Conforms around pipes and ducts
- Expands and contracts with deflection

## Applications

- Combine with CAC 20-40 ceilings
- Private offices & meeting rooms
- Patient, exam & treatment rooms
- Classrooms
- Premanufactured/modular rooms
- New construction or post occupancy remediation



# Rockfon® Plenum Barrier Board

## LEED® V4 HIGHLIGHTS


### Materials and Resources (MR)

- Waste Management Planning ✓
- Interiors Life Cycle Impact Reduction ✓
- Environmental Product Declarations ✓
- Sourcing of Raw Materials ✓
- Material Ingredients ✓
- Waste Management ✓

### Indoor Environmental Quality (EQ)

- Low-Emitting Materials ✓
- Interior Lighting -
- Acoustic Performance ✓

**Recycled Content:** up to 40%

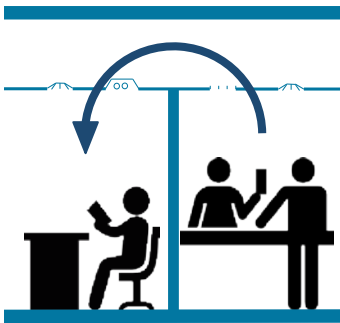
Edge designation	Item number	Board size	lbs/sqft	sqft/pallet	Fire Class
Square 	7900	2' x 4' x 1-1/2"	1	528	A

Budget: \$\$\$\$\$

## Material

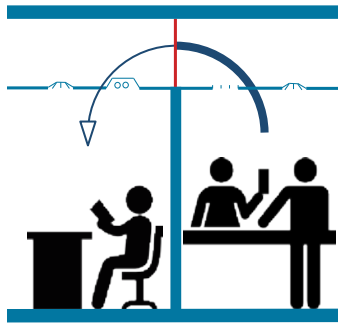
Stone wool (mineral wool) semi-rigid insulation board with reinforced aluminum foil facing adhered on one side

## Performance



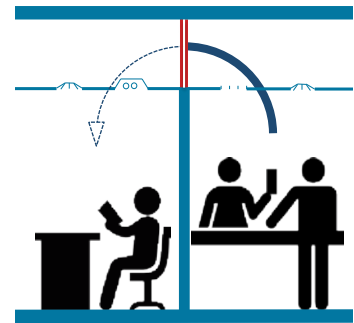
### Without Plenum Barrier Board

- Blocking level 20-35 STC/CAC/NIC
- Test report NGC-6016008
- Noncompliance with most standards
- Avoid this design approach



### With 1-Layer Plenum Barrier Board

- Blocking level 40 STC/CAC/NIC\*
- Test report NGC-6016016
- Compliance with some standards
- Use over walls with standard doors and large areas of glass



### With 2-Layer Plenum Barrier Board

- Blocking level 50+ STC/CAC/NIC\*
- Test report NGC-6016017
- Compliance with most standards
- Use over walls without doors and glass

Note:

**STC:** Sound Transmission Class    ASTM E90 / ASTM E413  
**CAC:** Ceiling Attenuation Class    ASTM E1414 / ASTM E413  
**NIC:** Noise Isolation Class    ASTM E336 / ASTM E413

\* Blocking level results from combining ceiling performance with plenum barrier performance. Ceiling should be standard, 5/8" thick (or thicker), stone wool ceiling panels in suspension grid. The construction of the interior partition should have equal or greater sound blocking performance.